



HAL
open science

Design of a complex filter for depth of focus extension

Frédéric Diaz, François Goudail, Brigitte Loiseau, Jean-Pierre Huignard

► **To cite this version:**

Frédéric Diaz, François Goudail, Brigitte Loiseau, Jean-Pierre Huignard. Design of a complex filter for depth of focus extension. *Optics Letters*, 2009, 34 (8), pp.1171-1173. hal-00746928

HAL Id: hal-00746928

<https://hal-iogs.archives-ouvertes.fr/hal-00746928>

Submitted on 30 Oct 2012

HAL is a multi-disciplinary open access archive for the deposit and dissemination of scientific research documents, whether they are published or not. The documents may come from teaching and research institutions in France or abroad, or from public or private research centers.

L'archive ouverte pluridisciplinaire **HAL**, est destinée au dépôt et à la diffusion de documents scientifiques de niveau recherche, publiés ou non, émanant des établissements d'enseignement et de recherche français ou étrangers, des laboratoires publics ou privés.

Design of a complex filter for depth of focus extension

Frédéric Diaz,^{1,2,*} François Goudail,² Brigitte Loiseaux,¹ and Jean-Pierre Huignard¹

¹Thales Research & Technology, RD 128, 91767 Palaiseau Cedex, France

²Laboratoire Charles Fabry de l'Institut d'Optique, CNRS, Université Paris-Sud, Campus Polytechnique, RD 128, 91127 Palaiseau Cedex, France

*Corresponding author: frederic.diaz@thalesgroup.com

Received October 23, 2008; revised February 10, 2009; accepted March 5, 2009;
posted March 13, 2009 (Doc. ID 103148); published April 7, 2009

Different methods such as axilens and binary-phase filter have been investigated to improve the depth of focus. A method is proposed to calculate an amplitude–phase pupil filter and obtain the desired distribution of intensity along the optical axis. It produces a narrow spot with a uniform intensity level over a large depth of focus, comparable to the performance obtainable with binary-phase filters. This filter is of particular interest for applications where very low intensity fluctuations along the focus range are required. © 2009 Optical Society of America

OCIS codes: 070.2580, 090.1760, 100.1390.

The design of pupil filters that enhance the depth of focus (DOF) of optical systems is a topic of great interest, and the simplest ones are probably amplitude filters [1]. Continuous phase filters [2–4] and binary-phase filters [5–7] can also enhance the DOF. They are usually considered as energy efficient compared to amplitude filters. However, in DOF extension the relevant parameter is not the total transmitted energy, but the “useful” one, that is, the energy concentrated in the focal line. With this criterion, amplitude–phase (complex) filters may have better performance. Besides, some complex filters have already been designed [8–10].

Our goal is to produce a light distribution as uniform as possible along the focal line. We will define the DOF as the length of the region along the optical axis, where the amplitude distribution has fluctuations lower than a given threshold. For given DOF and allowed fluctuations, our purpose is to determine the filter that maximizes the mean intensity in the DOF region. To reach this goal, we will compare two types of methods: a classical one based on binary-phase filter (BPF), also used for superresolution [11] and creation of circular Damman gratings [12], and a new approach based on a holographically generated complex filter (HGCF).

The BPF is composed of an array of n concentric rings whose phases are alternatively zero and π . Their outer radii are denoted r_1, r_2, \dots, r_{n-1} and are normalized with respect to the pupil radius [Fig. 1(a)]. Assuming that the aperture is small compared to the focal length, we obtain the following normalized amplitude distribution near the optical axis generated by a lens and a BPF:

$$A(\rho, z) = \exp(jkz)/z \times \exp(jk\rho^2/2z) \times \int_0^R P(\rho_P)\rho_P J_0(k\rho\rho_P/z) \times \exp[jk\rho_P^2(1/z - 1/f)/2]d\rho_P, \quad (1)$$

where λ is the wavelength, $k=2\pi/\lambda$; f is the focal

length; R the radius of the lens; ρ and z are the transverse and axial coordinates; ρ_P is the transverse coordinate in the pupil plane; J_0 is the zero-order Bessel function; and $P(\rho_P)$ is the complex amplitude of the BPF, equal to ± 1 .

Using Eq. (1), one can find parameters of the BPF that generate the desired DOF. We performed an exhaustive search by computing the DOF and mean intensity in the DOF region of all three-, five-, and seven-ring BPFs generated by varying the radii of each ring with steps of 0.001, 0.005, and 0.01, respectively. For each value of the DOF, we kept the BPF that gave the largest mean intensity. The mean intensity versus the DOF is shown in Fig. 1(b), using a lens with a focal length of 800 mm and an aperture of 16 mm, at a wavelength of 1064 nm, with variations below 10%. With a three-ring BPF, one can achieve a maximal DOF of 42 mm. Interestingly, for lower DOF, the use of five and seven rings does not improve the mean intensity. However, increasing the number of rings extends the range of accessible DOF.

As an original alternative we now propose to design a complex filter with the classical approach used for computer-generated holograms. Such a design first specifies the desired normalized amplitude at chosen points along the optical axis and then com-

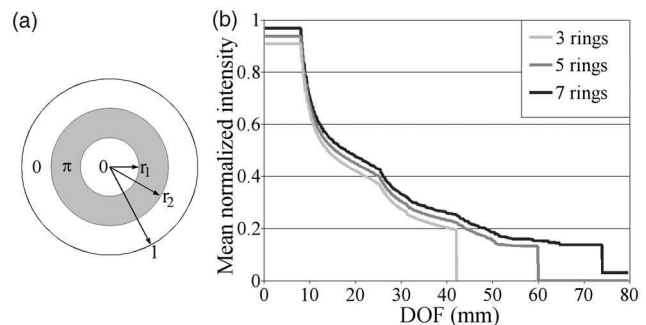


Fig. 1. (a) Structure of the BPF. (b) Mean normalized intensity in the DOF region versus DOF for BPFs with three, five, and seven rings. Curves are vertically shifted for clarity.

putes the filter that generates this distribution. That is to say, we can directly generate a complex filter that has a given DOF that we will call an HGCF.

Let us consider n points situated at the coordinates $z_i, i \in [1, n]$ on the optical axis, uniformly distributed throughout the desired DOF region, and set the desired normalized amplitude at each point equal to D_i . To obtain low variations inside the DOF region, we first set $D_i=1$. To calculate the HGCF providing the normalized amplitudes D_i at the coordinates z_i , we consider these points as elementary radiating point sources that emit waves of amplitudes A_i . Each point source generates at the pupil plane a complex amplitude $T_i(\rho)=A_i \exp(-jk\rho^2/2z_i)/z_i$, which can be seen as the complex transmittance of a lens with a focal length z_i . Illuminated by a plane wave, this lens generates an amplitude distribution along the optical axis equal to

$$A_z(z, A_i, z_i) = A_i \times A_{pt}(z, z_i) \times \exp(j\varphi_{pt}(z, z_i)), \quad (2)$$

with $A_{pt}(z, z_i) = 2 \sin[k(1/z - 1/z_i)R^2/4]/[k(z_i - z)]$ and $\varphi_{pt}(z, z_i) = k(z - z_i) + k(1/z - 1/z_i)R^2/4$.

The coherent combination of the point sources generates at the pupil plane a complex filter of transmittance $T(\rho) = \sum_i T_i(\rho)$, which corresponds to the amplitude distribution $A_{z, \text{tot}}(z) = \sum_i A_z(z, A_i, z_i)$. The coefficients A_i so that $\forall i, A_{z, \text{tot}}(z_i) = D_i$, are calculated by solving the following set of linear equations:

$$\vec{D} = Z \times \vec{A}, \quad (3)$$

where vector \vec{D} contains the D_i , vector \vec{A} contains the A_i , and Z is a $n \times n$ matrix containing the amplitude associated to each point source i , with $A_i=1$, at the coordinates z_i : $Z_{i,j} = A_z(z_j, 1, z_i)$. The values of A_i are obtained by inverting the matrix Z , and the complex transmission of the obtained HGCF is

$$T(\rho) = \frac{\sum_i T_i(\rho)}{\max_{\rho} \left| \sum_i T_i(\rho) \right|} \exp(jk\rho^2/2f), \quad (4)$$

where the phase already introduced by the lens has been removed and the transmittance normalized so that its maximal modulus is 1. Since we consider spatially incoherent imaging, the interesting value is the intensity distribution along the optical axis,

$$I_z(z) \propto \left| \sum_i A_i \times A_{pt}(z, z_i) \times \exp(j\varphi_{pt}(z, z_i)) \right|^2. \quad (5)$$

While the function $A_{pt}(z, z_i)$ has relatively slow variations, the $\exp(j\varphi_{pt}(z, z_i))$ phase terms introduce fast and large intensity fluctuations between the point sources. These terms can be removed by choosing point sources satisfying the relation $\varphi_{pt}(z_i, f) = 2\pi p_i$ with p_i integer numbers. By taking point sources close enough to each other compared to the width of the function $A_{pt}(z, z_i)$, the variations of intensity can be reduced below 1%. The mean intensity in the DOF region can be further improved by optimizing their positions z_i and desired amplitudes D_i . We also use

two extra point sources, before and after the DOF region, with low desired amplitudes, to decrease faster the intensity outside the DOF region. We noticed that this also increases the intensity in the DOF region. Performing a numerical optimization, we managed to increase the intensity in the DOF region up to a factor of 3 compared to the nonoptimized HGCF.

Figure 2 illustrates an example of results with seven point sources in the DOF region and two outside to obtain a 33 mm DOF, which represents a defocus of $W_{20} = 0.76\lambda$, with fluctuations below 1%, centered on the focal plane. The FWHM of the point-spread function (PSF) of the HGCF should be compared to that of a single lens, which exhibits only a 2.1 mm DOF with fluctuations below 1%. This represents a gain on the DOF of a factor of 16, while the maximal intensity obtained with the HGCF on the axis is divided by a factor of 8 compared to the single lens at the focal plane.

We compared in Fig. 2 the HGCF with the BPF having the same DOF at the same fluctuation level, whose radii are $r_1=0.24$, $r_2=0.31$, $r_3=0.39$, $r_4=0.47$, $r_5=0.84$, and $r_6=0.96$. Their performances are comparable, although the HGCF has a mean amplitude transmission of 63%. This drop of transmission is compensated by a better concentration of energy in the DOF region, thanks to the contribution of the amplitude part of the filter. Moreover, with the HGCF, it is possible to achieve an accurate design of the DOF region that is directly linked to the choice of point sources. In our example, the DOF region is centered on the focal point, whereas the DOF region of the BPF is asymmetrically distributed between $z=768$ and 801 mm. Further advantages of the HGCF are the sharper decrease of the intensity at the limit of the DOF region, lower sidelobes (about 16% of the intensity in the DOF region for the HGCF against up to 23% for the BPF), and the better invariance of the transverse spot size with respect to z inside the DOF region. The phase distributions of the BPF and the HGCF plotted in Fig. 3 show great similarities. Despite them, setting the transmission of the HGCF to 1 on the whole pupil does not provide good results. The amplitude modulation is required to yield an optimal result.

In conventional optically generated off axis holograms, the spacing of the interference fringes is comparable to the wavelength, making the hologram output very sensitive to wavelength. With the HGCF, since we operate along the direction of the zero order

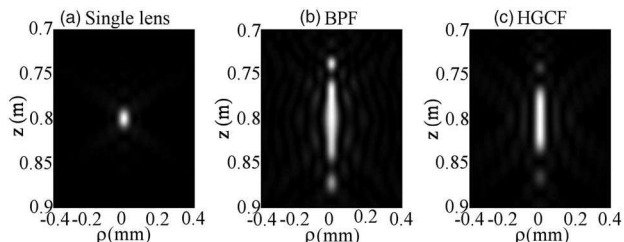


Fig. 2. (a) Normalized intensity distribution in the focal region for the single lens, (b) for the BPF with a DOF of 33 mm with fluctuation below 1%, and (c) for the HGCF with the same DOF.

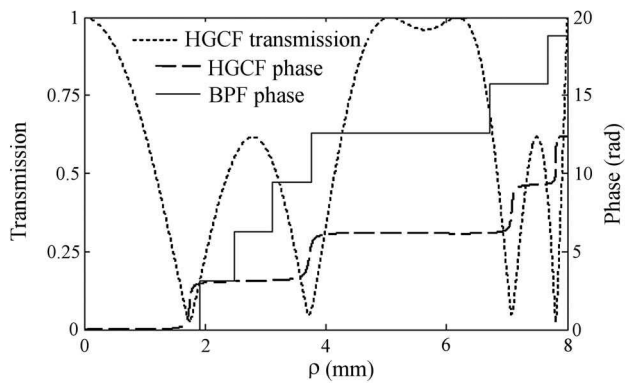


Fig. 3. Profiles of the amplitude transmission and phase of the BPF and the HGCF.

of diffraction, the scale of the spatial variations of the phase and the amplitude is very large compared to the wavelength, as can be seen in Fig. 3. Consequently, assuming that the medium where the phase modulation is recorded is nondispersive, we calculated that its performance remains fairly constant for an illumination with a bandwidth of around 100 nm. The behavior of the HGCF with respect to wavelength is comparable to that of the BPF.

Finally, we compared in Fig. 4 the mean intensities of the optimal BPF and HGCF versus the DOF, for

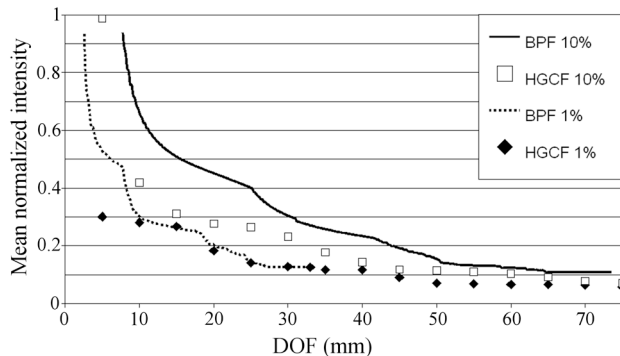


Fig. 4. Mean normalized intensity versus DOF for BPF and HGCF with fluctuations below 10% and 1%.

fluctuations below 10% and 1%. We can point out that, for DOF intensity fluctuations below 10%, the BPF is clearly more efficient than the HGCF. However, for fluctuations below 1%, the HGCF yields results similar to the seven-ring BPF, while it makes it possible to reach a longer DOF. We voluntarily limited ourselves to seven rings for the BPF, and we did not find any configuration giving a DOF larger than 33 mm.

We proposed a new holographic design for an amplitude phase filter that we called HGCF. Such a filter can be realized using nanostructured materials for the phase and variable transmission mask for the amplitude. The HGCF is an alternative to the BPF for applications where very low fluctuations of the amplitude distribution along the optical axis are required and when the shape of the focal line has to be precisely tailored. It also benefits from lower side-lobes and a better invariance of the PSF with respect to z inside the DOF region. Moreover, it is as energy efficient as a BPF, even taking into account its absorption.

References

1. W. T. Welford, *J. Opt. Soc. Am. A* **50**, 749 (1960).
2. J. H. McLeod, *J. Opt. Soc. Am.* **44**, 592 (1953).
3. J. Sochacki, S. Bara, Z. Jaroszewicz, and A. Kolodziejczyk, *Opt. Lett.* **17**, 7 (1992).
4. E. Marom, D. Mendlovic, N. Konforti, J. Katz, and C. Tan, *Proc. SPIE* **3010**, 30 (1997).
5. H. Wang and F. Gan, *Appl. Opt.* **40**, 5658 (2001).
6. L. Liu, C. Liu, W. C. Howe, C. J. R. Sheppard, and N. Chen, *Opt. Lett.* **32**, 2375 (2007).
7. L. Liu, F. Diaz, L. Wang, B. Loiseaux, J.-P. Huignard, C. J. R. Sheppard, and N. Chen, *J. Opt. Soc. Am. A* **25**, 2095 (2008).
8. M. Yun, L. Liu, J. Sun, and D. Liu, *J. Opt. Soc. Am. A* **22**, 272 (2005).
9. S. Förster, H. Gross, F. Höller, and L. Höring, *Proc. SPIE* **5962**, 44 (2005).
10. S. Bagheri and B. Javidi, *Opt. Lett.* **33**, 757 (2008).
11. J. Jia and C. Zhou, and L. Liu, *Opt. Commun.* **228**, 271 (2003).
12. C. Zhou, J. Jia, and L. Liu, *Opt. Lett.* **28**, 2174 (2003).